



**Area Amenities**

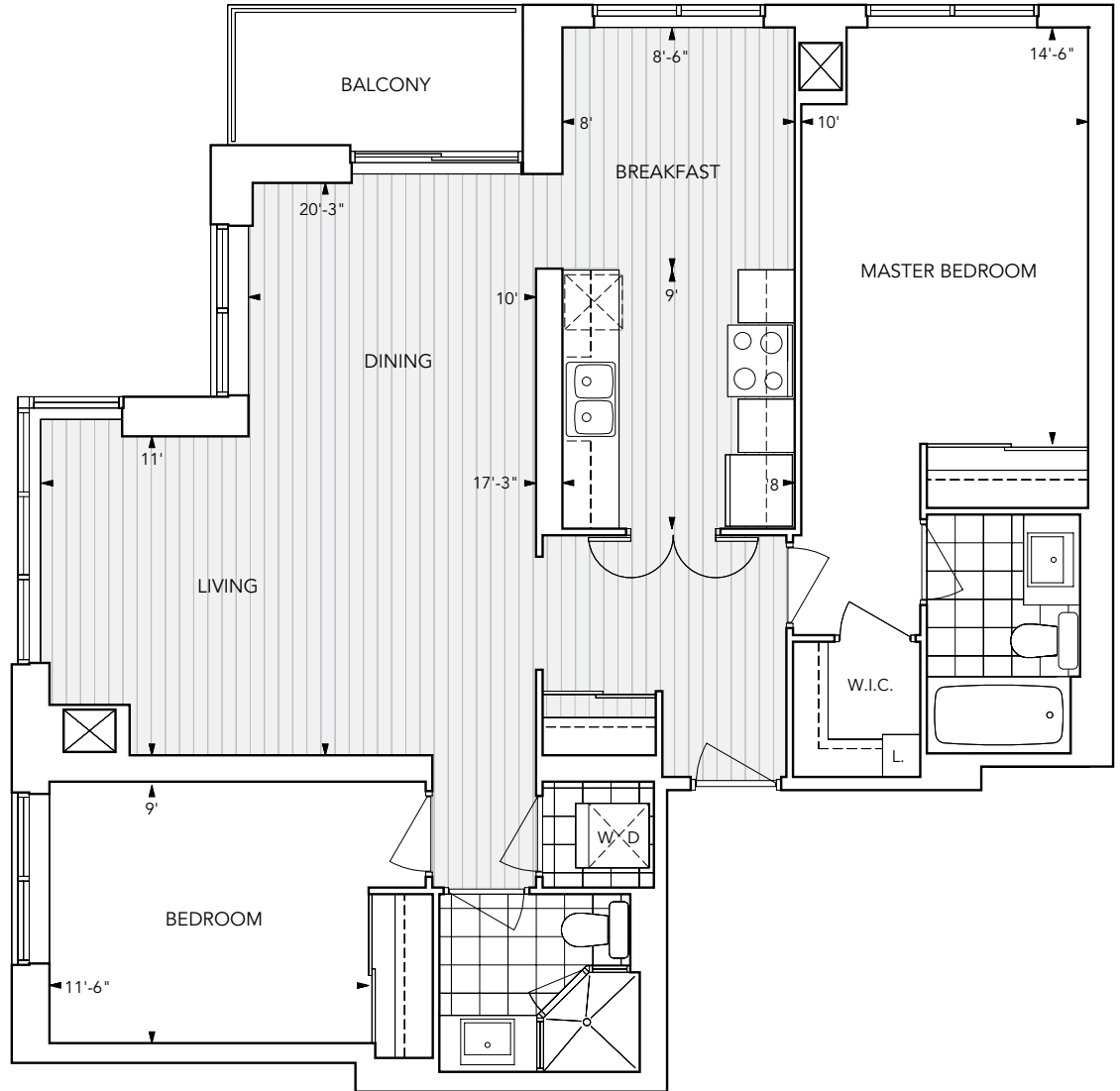
- Located at Dundas Street just west of Kipling Ave
- Walking distance to Kipling Subway, GO Bus & Train Station
- Minutes from the 427 and QEW
- Close to Sherway Gardens Mall and boutique shopping
- Surrounded by parks, restaurants and entertainment

**Building Amenities**

- Dramatic 29 storey residence
- Contemporary 2 storey lobby with 24 hour Concierge
- Spectacular Club NUVO with indoor Swimming Pool, Whirlpool, Steam Room, Saunas, Party Room, Fitness & Aerobics centre, Golf Centre, Scening Theatre and much more

**Brief Features List\***

- Beautiful plank laminate floating flooring in principal rooms
- Nuvo at Essex Signature kitchen cabinetry with granite kitchen countertops
- Premium quality black appliances
- Communication wiring centre (high speed)



**Sales Centre**

**(416) 231-0999**

At Dundas St. W., immediately west of Kipling Ave.

**Hours:**

Monday to Thursday: 12:00 pm – 8:00 pm

Fridays, weekends & holidays: 12:00 pm – 6:00 pm

\*Some features may vary by suite design. Prices and specifications subject to change without notice. See sales representative for details. E. & O.E. April 4, 2008.



**Area Amenities**

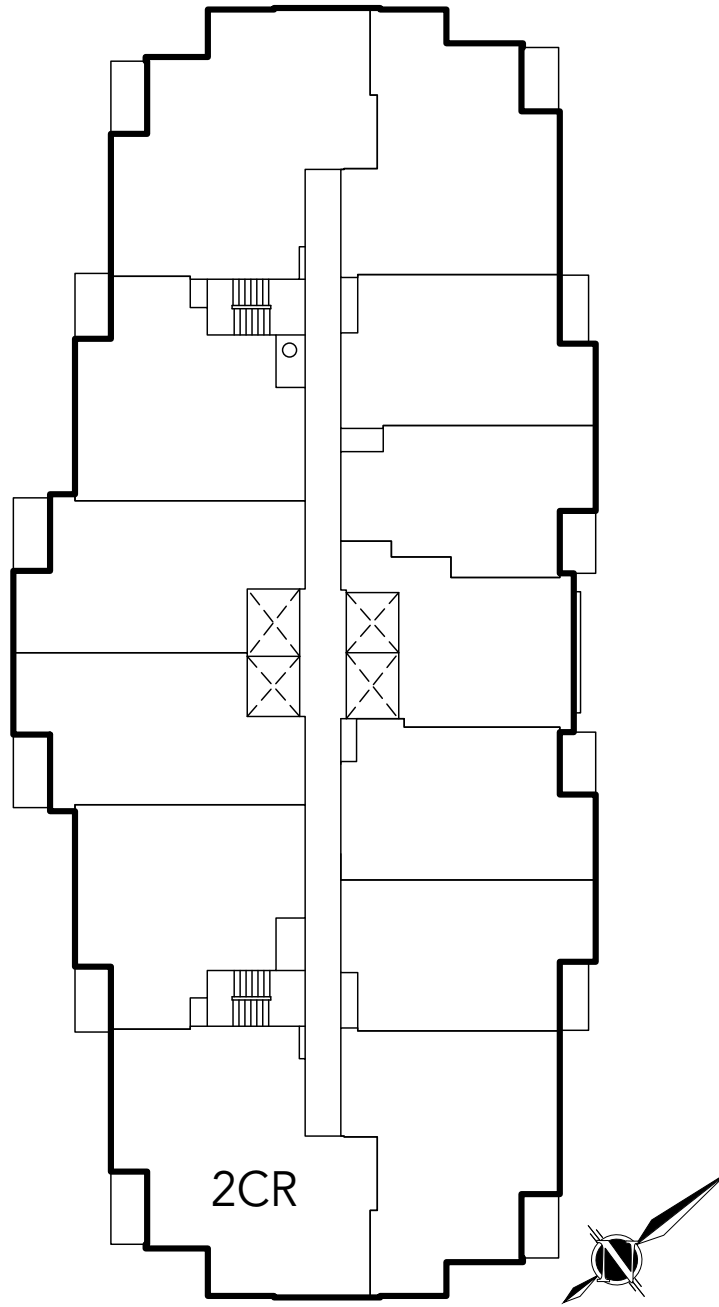
- Located at Dundas Street just west of Kipling Ave
- Walking distance to Kipling Subway, GO Bus & Train Station
- Minutes from the 427 and QEW
- Close to Sherway Gardens Mall and boutique shopping
- Surrounded by parks, restaurants and entertainment

**Building Amenities**

- Dramatic 29 storey residence
- Contemporary 2 storey lobby with 24 hour Concierge
- Spectacular Club NUVO with indoor Swimming Pool, Whirlpool, Steam Room, Saunas, Party Room, Fitness & Aerobics centre, Golf Centre, Scening Theatre and much more

**Brief Features List\***

- Beautiful plank laminate floating flooring in principal rooms
- Nuvo at Essex Signature kitchen cabinetry with granite kitchen countertops
- Premium quality black appliances
- Communication wiring centre (high speed)



TYPICAL FLOOR



**Sales Centre**

**(416) 231-0999**

At Dundas St. W., immediately west of Kipling Ave.

**Hours:**

Monday to Thursday: 12:00 pm – 8:00 pm

Fridays, weekends & holidays: 12:00 pm – 6:00 pm

\*Some features may vary by suite design. Prices and specifications subject to change without notice. See sales representative for details. E. & O.E. April 4, 2008.



**LEVEL P1**



**Sales Centre**

**(416) 231-0999**

At Dundas St. W., immediately west of Kipling Ave.

**Hours:**

Monday to Thursday: 12:00 pm - 8:00 pm

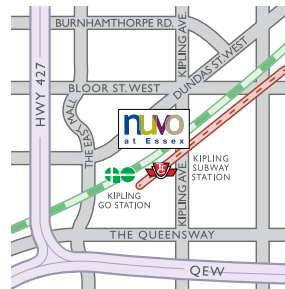
Fridays, weekends & holidays: 12:00 pm – 6:00 pm

\*Some features may vary by suite design. Prices and specifications subject to change without notice.

See sales representative for details. E. & O.E. July 28, 2005.



**GROUND LEVEL**



**Sales Centre**  
**(416) 231-0999**  
At Dundas St. W., immediately west of Kipling Ave.

Hours:  
Monday to Thursday: 12:00 pm - 8:00 pm  
Fridays, weekends & holidays: 12:00 pm – 6:00 pm

\*Some features may vary by suite design. Prices and specifications subject to change without notice.  
See sales representative for details. E. & O.E. July 28, 2005.